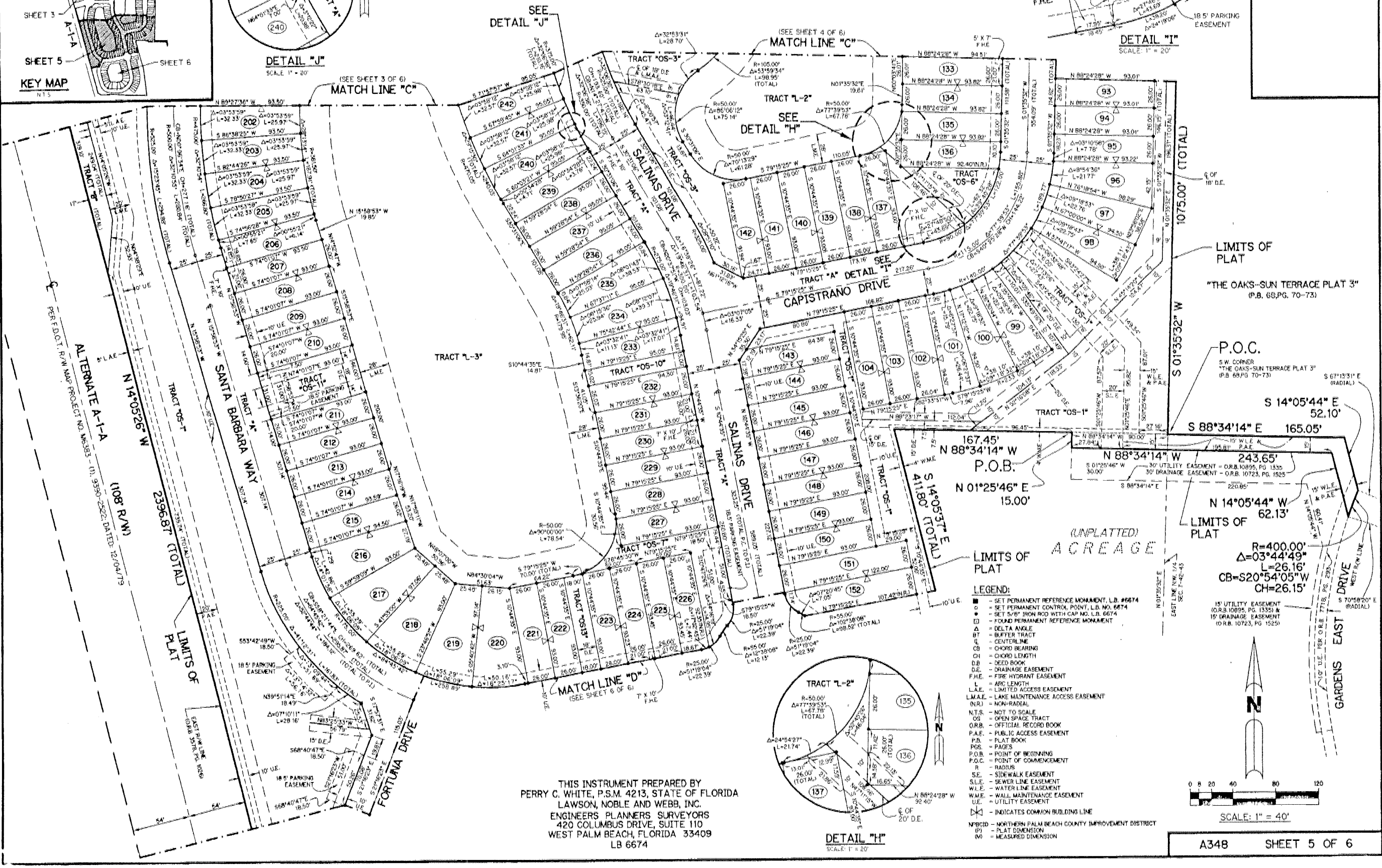
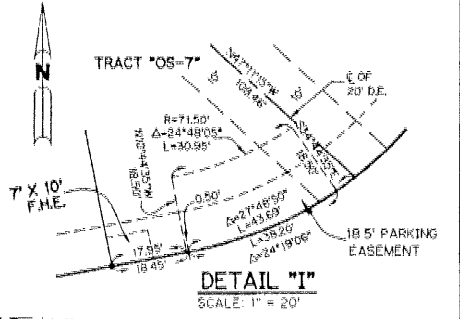
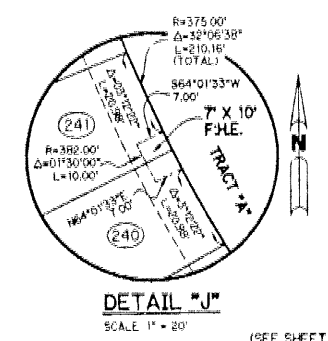
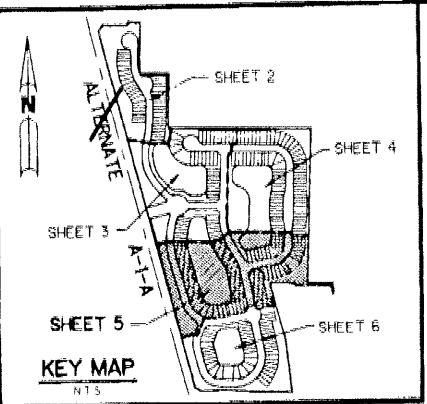


CATALINA LAKES

A PARCEL OF LAND LYING IN SECTION 7, TOWNSHIP 42 SOUTH, RANGE 43 EAST
CITY OF PALM BEACH GARDENS, PALM BEACH COUNTY, FLORIDA
SHEET 5 OF 6 JANUARY, 2001

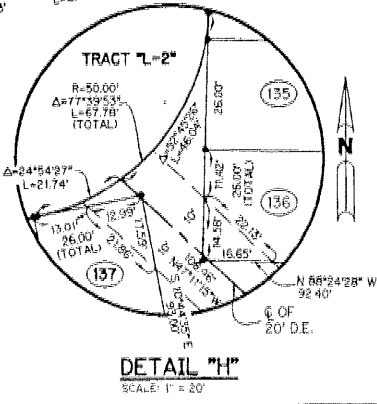


LIMITS OF PLAT
"THE OAKS-SUN TERRACE PLAT 3"
(P.B. 68, PG. 70-73)

P.O.C.
S.W. CORNER
"THE OAKS-SUN TERRACE PLAT 3"
(P.B. 68, PG. 70-73)

LIMITS OF PLAT
R=400.00'
Δ=03°44'49"
L=26.16'
CB=S20°54'05"W
CH=26.15'

- LEGEND:
- - SET PERMANENT REFERENCE MONUMENT, L.B. #6674
 - - SET PERMANENT CONTROL POINT, L.B. NO. 6674
 - - SET 5/8" IRON ROD WITH CAP NO. L.B. 6674
 - - FOUND PERMANENT REFERENCE MONUMENT
 - Δ - DELTA ANGLE
 - BT - BUFFER TRACT
 - CL - CENTERLINE
 - CB - CHORD BEARING
 - CH - CHORD LENGTH
 - DB - DEED BOOK
 - D.E. - DRAINAGE EASEMENT
 - F.H.E. - FIRE HYDRANT EASEMENT
 - L - ARC LENGTH
 - L.A.E. - LIMITED ACCESS EASEMENT
 - L.M.A.E. - LAKE MAINTENANCE ACCESS EASEMENT
 - (N.R.) - NON-RADIAL
 - N.T.S. - NOT TO SCALE
 - OS - OPEN SPACE TRACT
 - O.R.B. - OFFICIAL RECORD BOOK
 - P.A.E. - PUBLIC ACCESS EASEMENT
 - P.B. - PLAT BOOK
 - PG. - PAGE(S)
 - P.O.B. - POINT OF BEGINNING
 - P.O.C. - POINT OF COMMENCEMENT
 - R - RADIUS
 - S.E. - SIDEWALK EASEMENT
 - S.L.E. - SIDEWALK EASEMENT
 - S.W.E. - SEWER LINE EASEMENT
 - W.L.E. - WATER LINE EASEMENT
 - W.M.E. - WALL MAINTENANCE EASEMENT
 - U.E. - UTILITY EASEMENT
 - ⊠ - INDICATES COMMON BUILDING LINE
- N.B.C.I.D. - NORTHERN PALM BEACH COUNTY IMPROVEMENT DISTRICT
(P) - PLAT DIMENSION
(M) - MEASURED DIMENSION



THIS INSTRUMENT PREPARED BY
PERRY C. WHITE, P.S.M. 4213, STATE OF FLORIDA
LAWSON, NOBLE AND WEBB, INC.
ENGINEERS PLANNERS SURVEYORS
420 COLUMBUS DRIVE, SUITE 110
WEST PALM BEACH, FLORIDA 33409
LB 6674

